



# BALBOA WATER GROUP

***BWA APP FOR IOS & ANDROID DEVICES***



bwa™ for Android™

bwa™ for iOS®

## ANYWHERE. ANYPLACE.

*Access your spa via*

1. a direct connection anywhere in the local proximity of your tub = ***(INITIAL SETUP)***
2. anywhere in your house that you can connect to your local WiFi network = ***(LOCAL CONNECT)***
3. anywhere in the World you have an internet connection to your smart device via 3G, 4G or WiFi hot spots = ***(CLOUD CONNECT)***



# BALBOA WATER GROUP

## BWA APP FOR IOS & ANDROID DEVICES

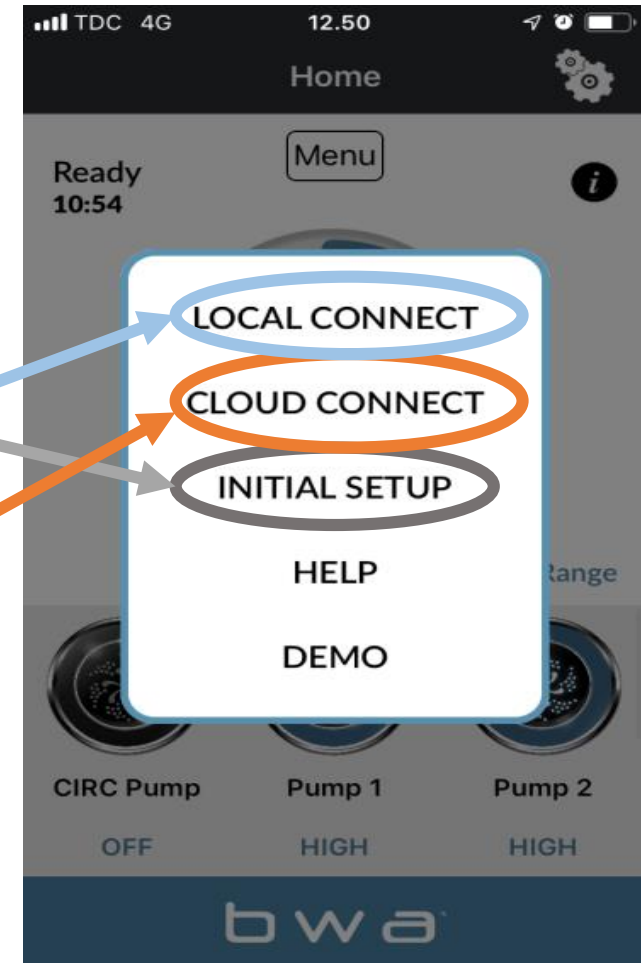


*There are 3 connection possibilities with the BWA app*

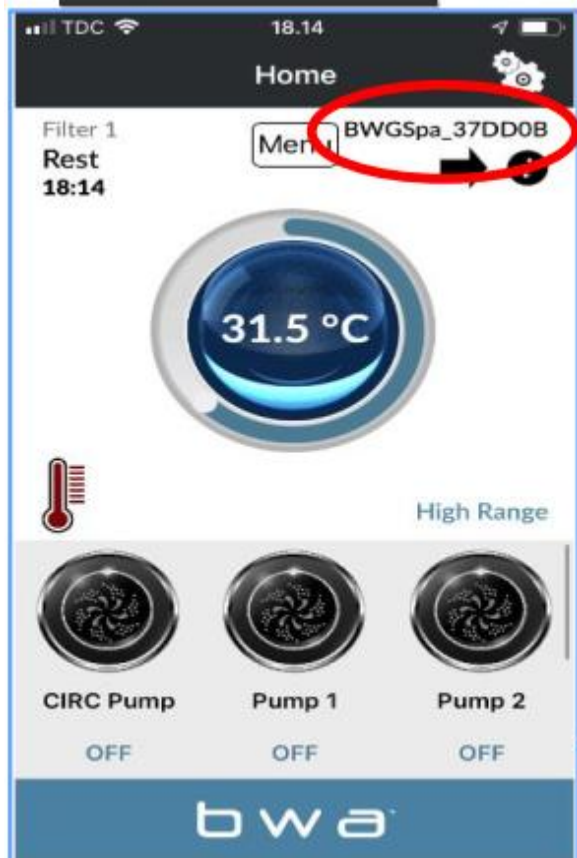
**STEP 1: INITIAL SETUP** – the app connects directly to the wifi module

**STEP 2: LOCAL CONNECT** – the app connects to the local wifi network

**STEP 3: CLOUD CONNECT** – the app connects through cloud via WIFI/3G/4G



# BWA CONNECTION



INITIAL SETUP



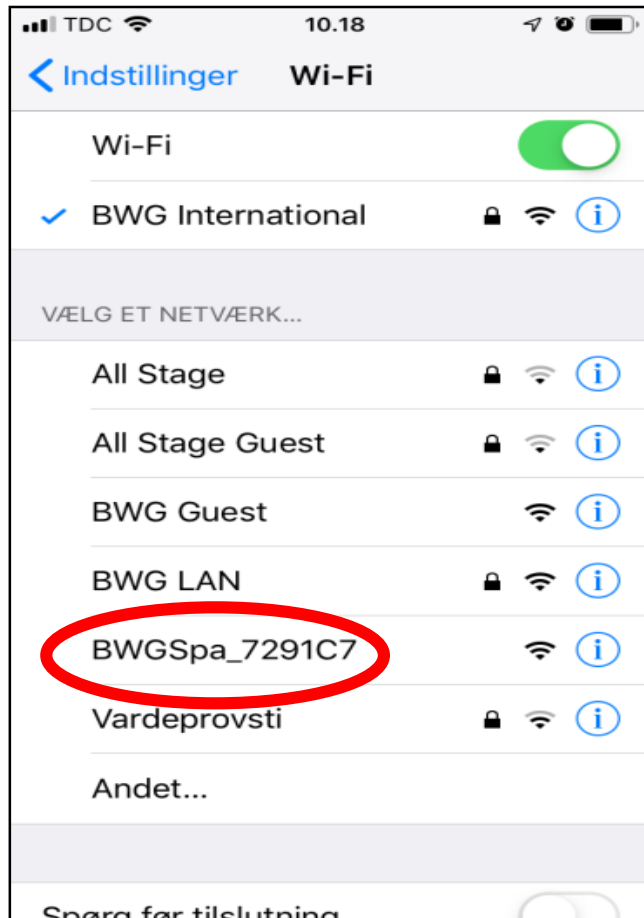
LOCAL CONNECT



CLOUD CONNECT

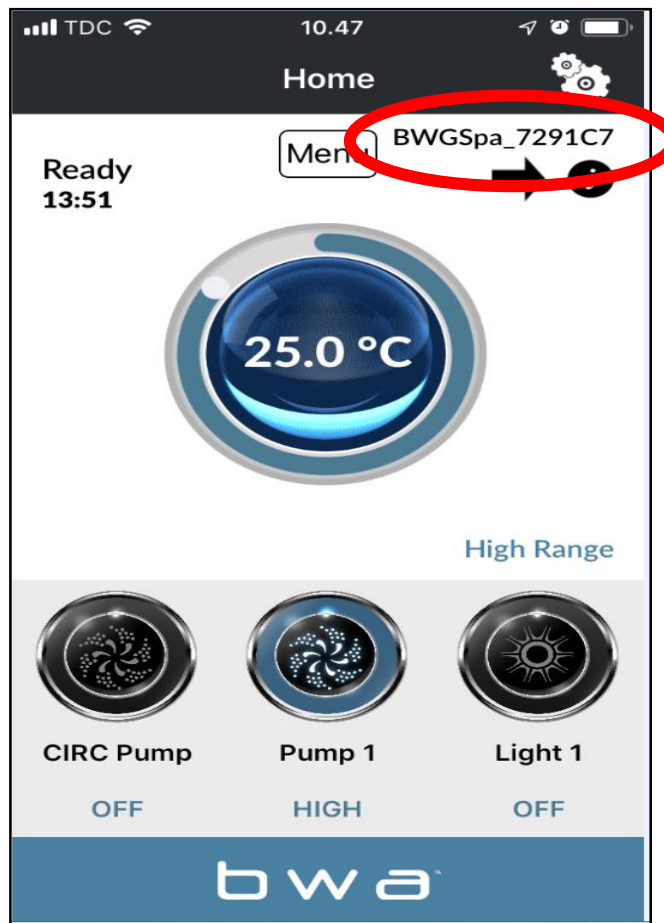
# BALBOA WATER GROUP *BWA APP FOR IOS & ANDROID DEVICES*

## STARTUP



1. Before starting, make sure that the WiFi module is connected to the Balboa BP control box
2. Go to the WiFi settings of your device.
3. Identify the BWA network BWGSpa\_XXXXXX
4. Connect to the BWA network BWGSpa\_XXXXXX

## INITIAL SETUP



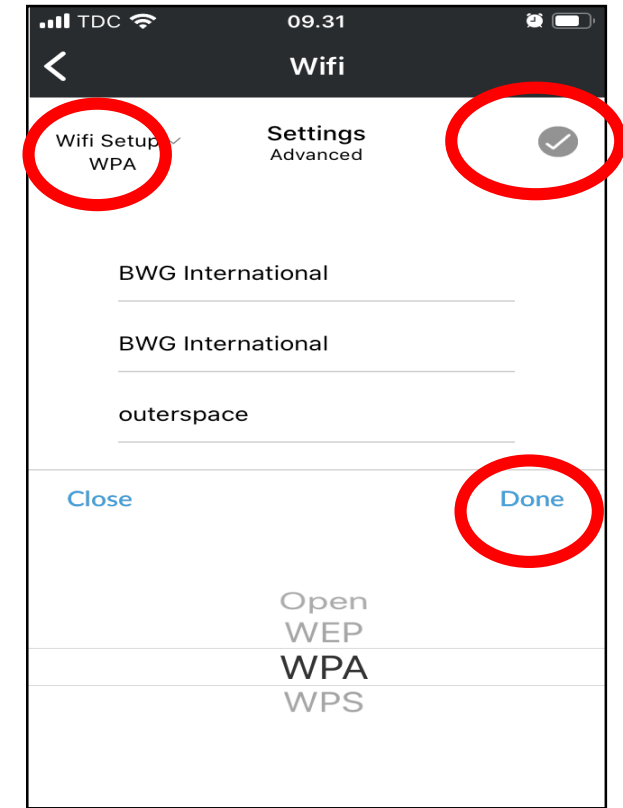
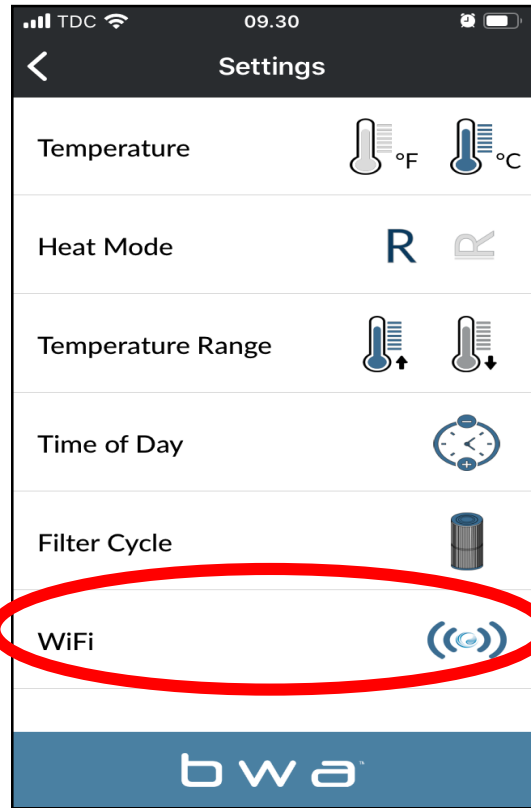
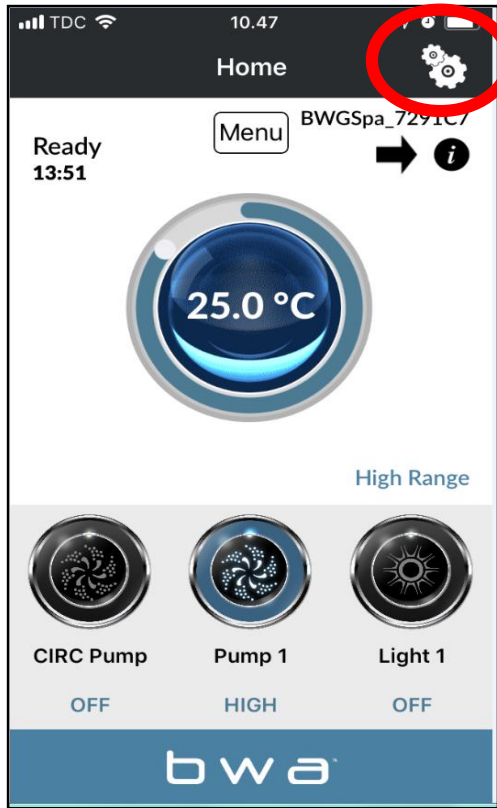
1. Open the BWA app.
2. Press INITIAL SETUP and follow the instructions.
3. You are now directly connected to your spa via the BWA module.
4. The BWGSpa\_xxxxxx network is shown.
5. Test the connection by turning ON/OFF the devices in your spa.




# BALBOA WATER GROUP *BWA APP FOR IOS & ANDROID DEVICES*



## LOCAL CONNECT

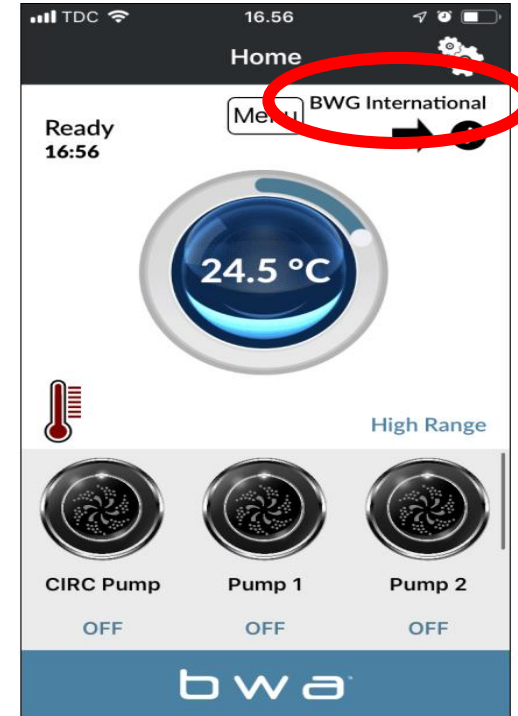


1. While still connected via INITIAL SETUP, access the settings menu via the settings wheel
2. Access the WIFI menu
3. Enter your WiFi Network Name and WiFi Network Password.
4. Choose your WiFi Network security (OPEN/WEP/WPA/WPS)
5. Press the checkmark  and then "Done"

# BALBOA WATER GROUP *BWA APP FOR IOS & ANDROID DEVICES*



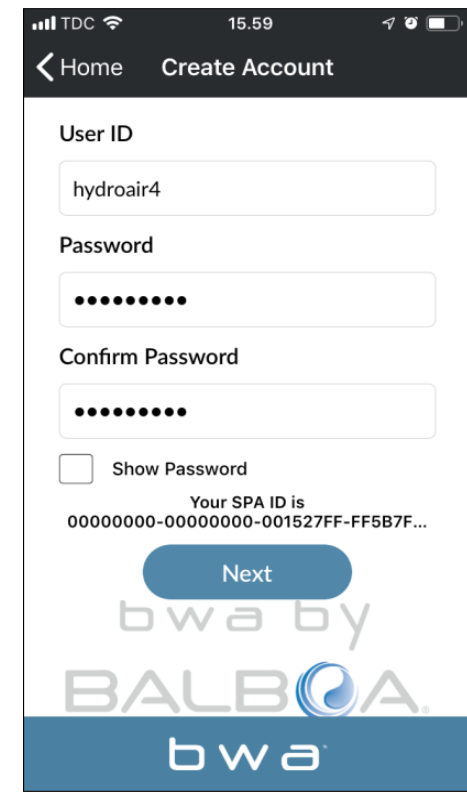
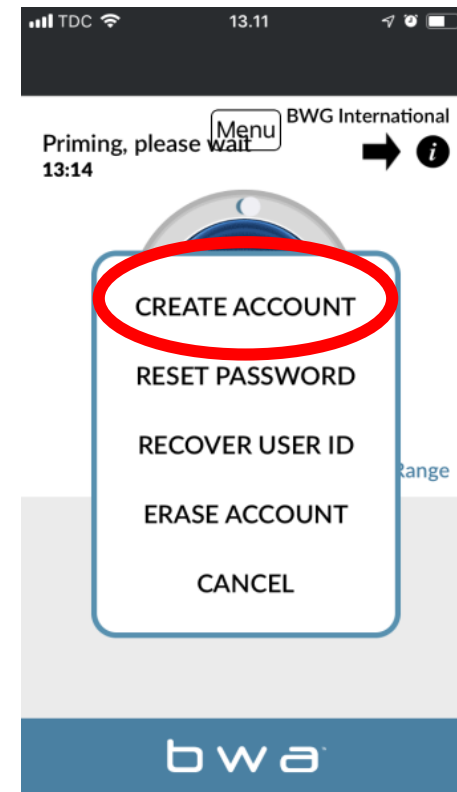
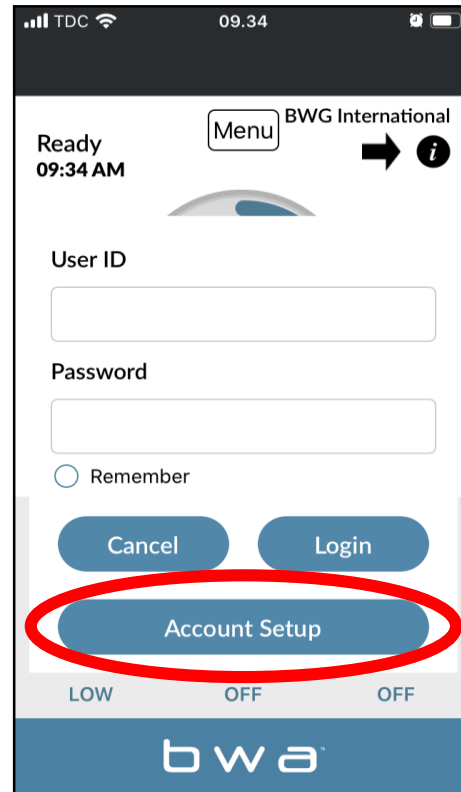
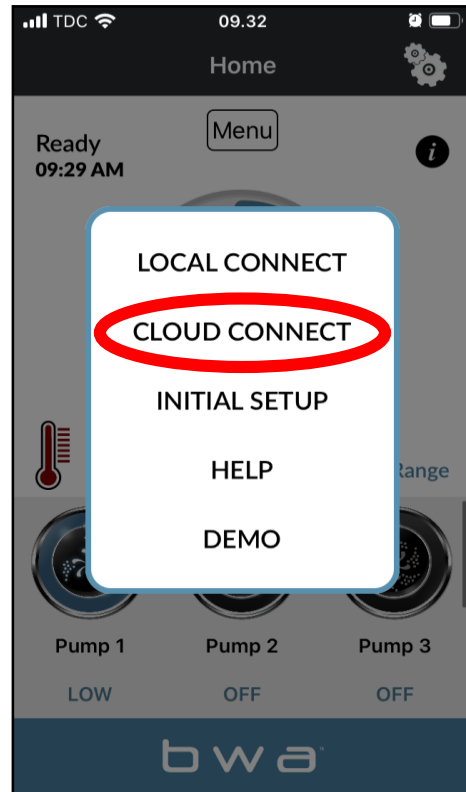
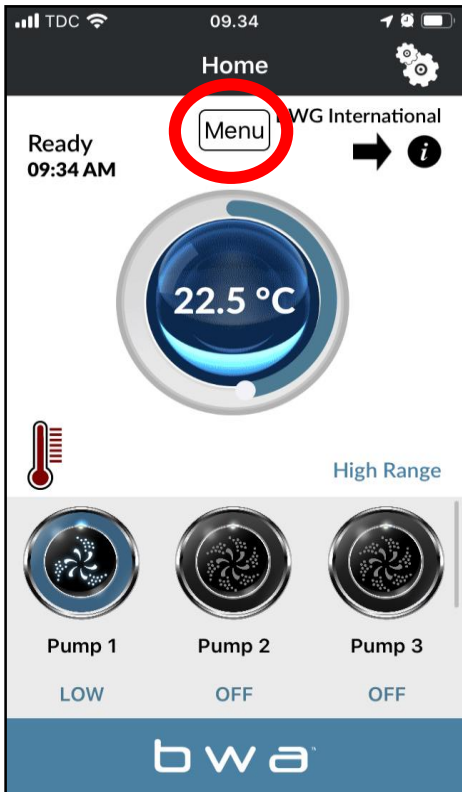
## LOCAL CONNECT *(continue)*



1. If you successfully entered your local network User name and Password. Press OK and wait 1 to 2 minutes.
2. Verify that your device is now connected to your local network. You will NO more see the BWGSpa\_xxxxxx network.
3. Open the BWA app and press LOCAL CONNECT.
4. Connection to your local network is successful. Your local network is now visible on the app.

# BALBOA WATER GROUP *BWA APP FOR IOS & ANDROID DEVICES*

## CLOUD CONNECT

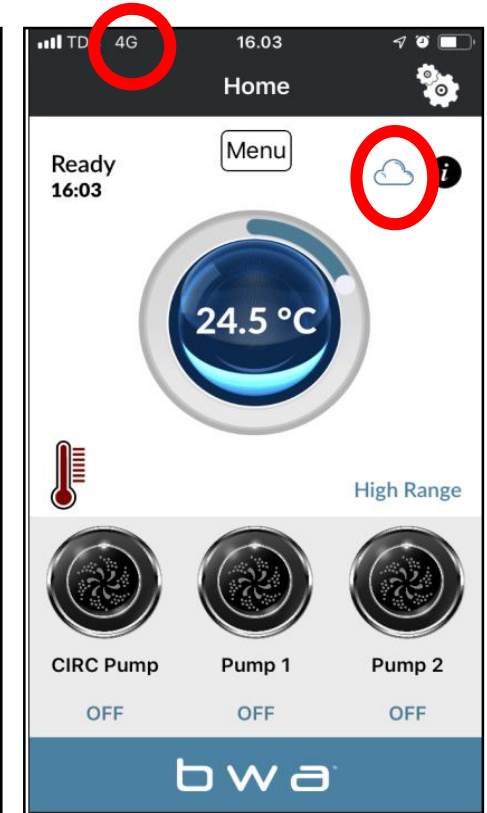
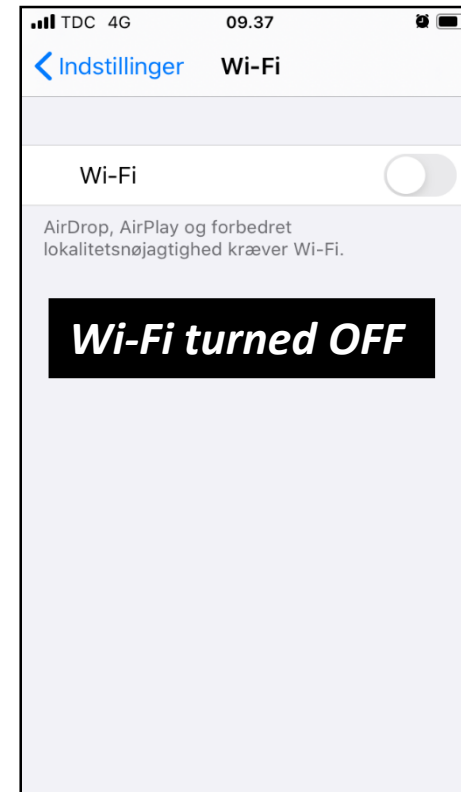
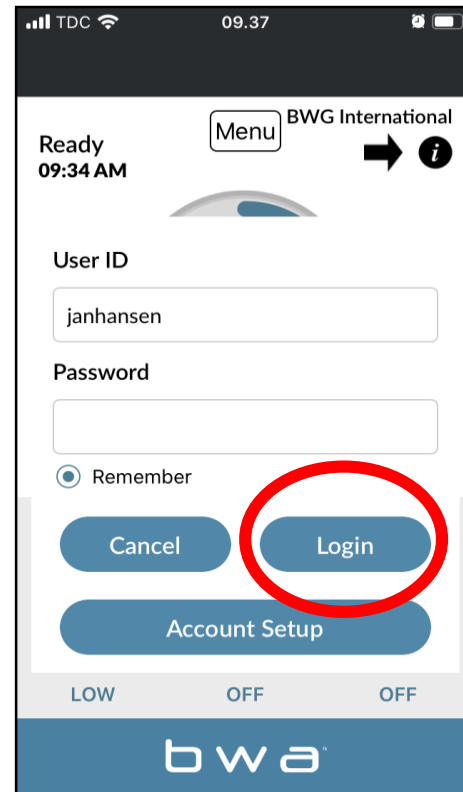
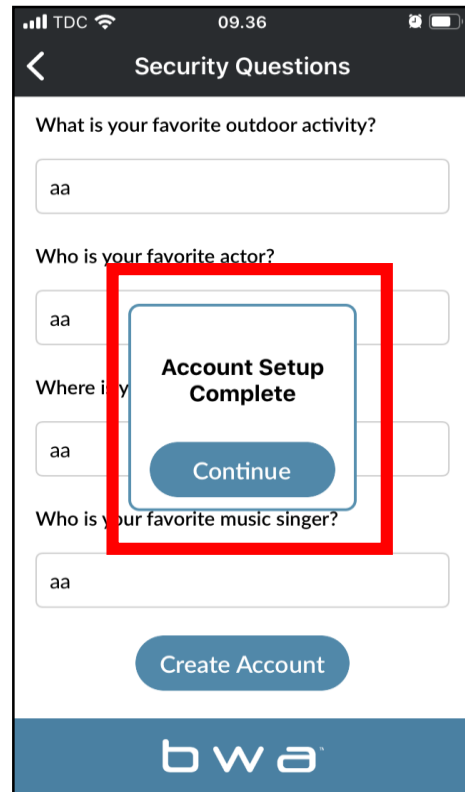
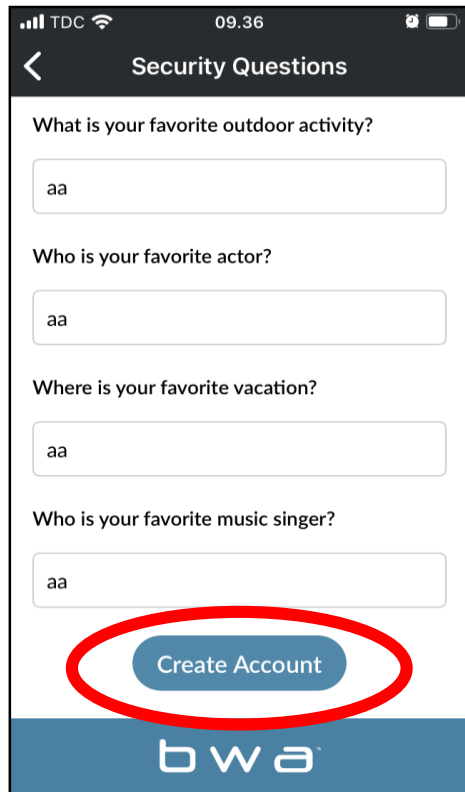


1. While in LOCAL CONNECT, press the MENU button and then “CLOUD CONNECT”
2. Press “Account Setup” and then “CREATE ACCOUNT”
3. Choose and enter a “User ID” and “Password”



# BALBOA WATER GROUP *BWA APP FOR IOS & ANDROID DEVICES*

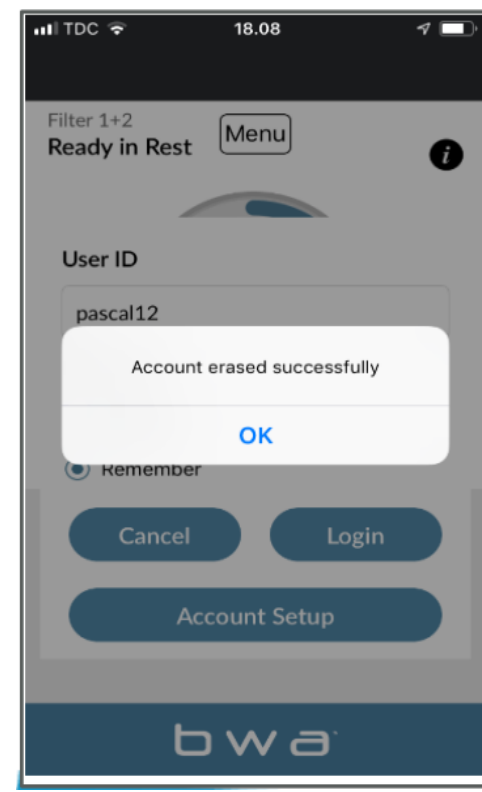
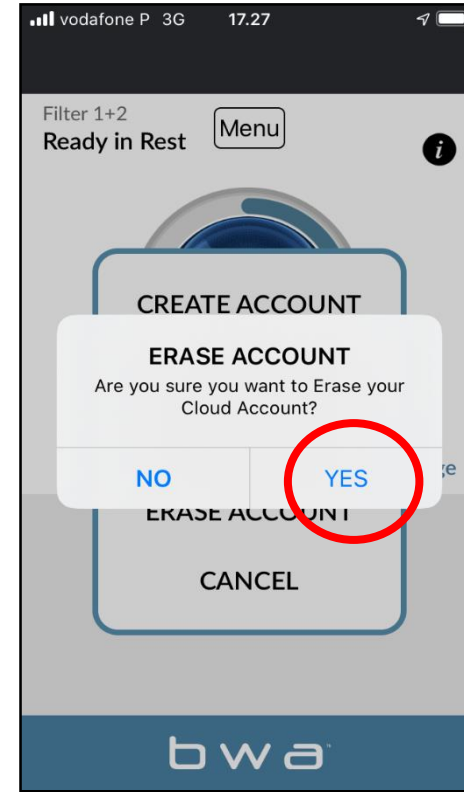
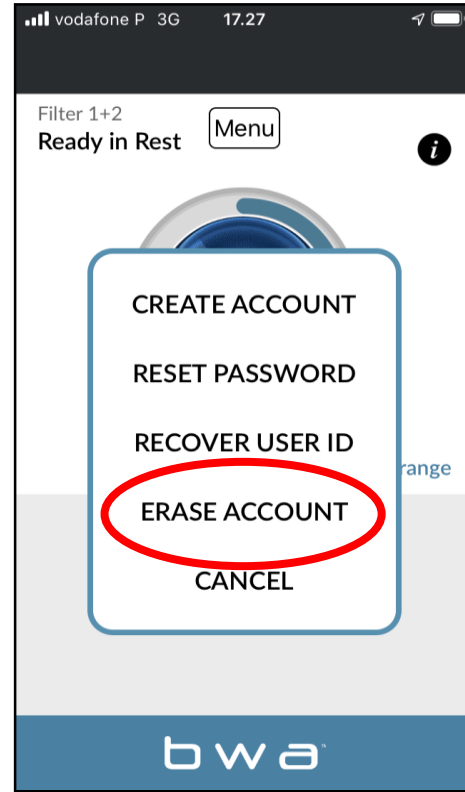
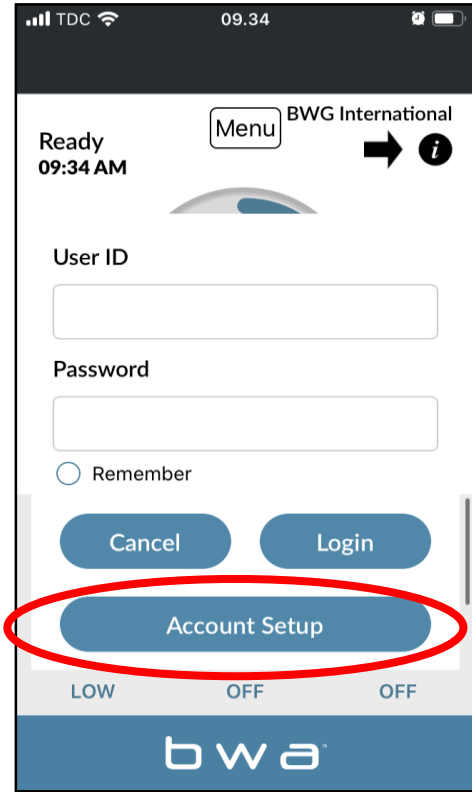
## CLOUD CONNECT *(continue)*



1. Answer the 5 security questions. You can use the example illustrated.
2. Account Setup is now complete
3. You can enter your User ID and Password. Then press “Login”. Check “Remember” so that your details are saved.
4. Your spa is now connected via CLOUD.



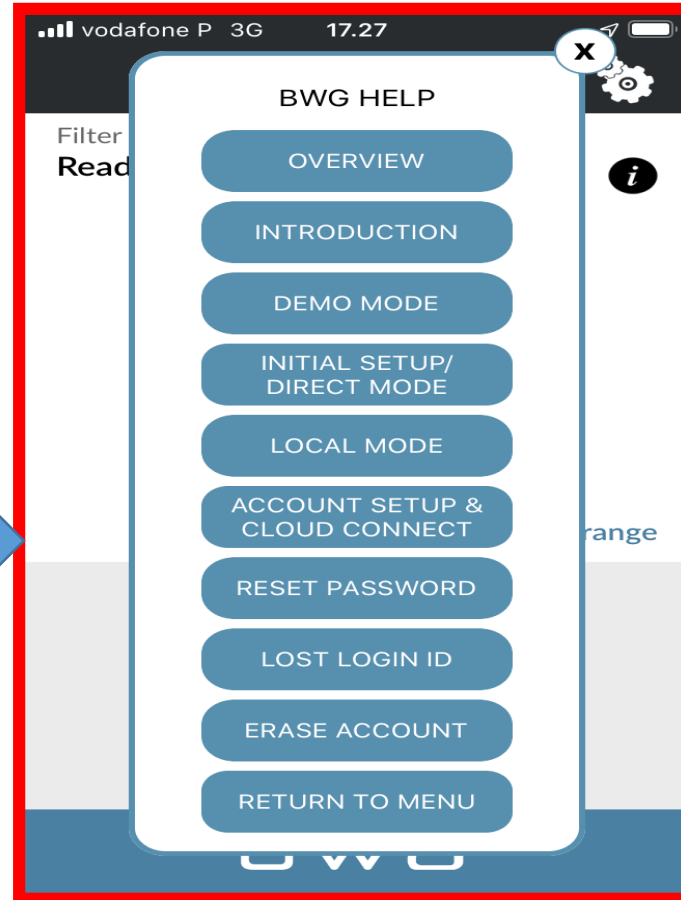
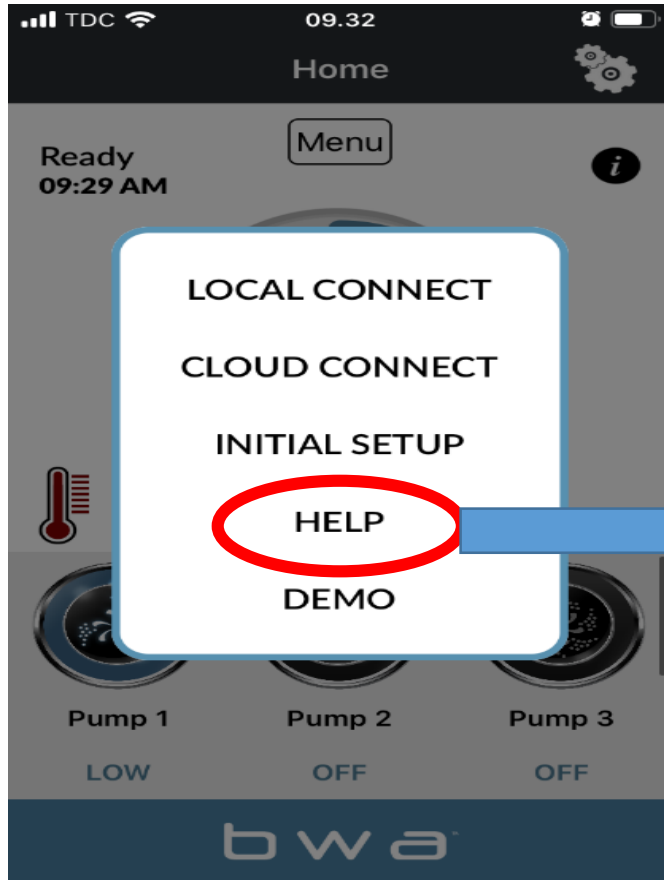
## ERASE ACCOUNT



1. To ERASE your account, press CLOUD CONNECT
2. Then press "Account Setup"
3. Then, ERASE ACCOUNT.
4. Confirm by pressing "YES".

# BALBOA WATER GROUP *BWA APP FOR IOS & ANDROID DEVICES*

## HELP



***PRESS "HELP" AT ANY POINT DURING THE INSTALLTION PROCESS TO ACCESS YOUTUBE VIDEOS EXPLAINING WHAT TO DO***

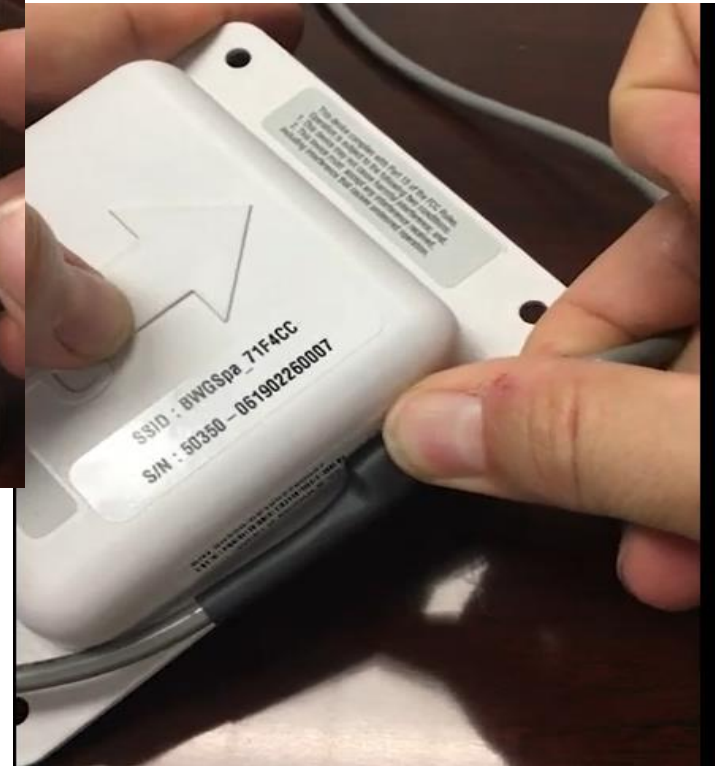
# BALBOA WATER GROUP

## WIFI ROUTER REQUIREMENTS

- ***BWA™ communicates over a 2.4GHz home network supporting 802.11b/g/n wireless technology.***
- ***5GHz networks are not supported.***
- ***Standard wireless setup supports only home network routers configured to use open (no security) or WEP/WPA/WPA2.***
- ***Make sure the router / router extender is broadcasting on channels 1-11.***
- ***A Wi-Fi signal strength of -50 dBM or better is highly suggested to ensure non-interrupted cloud service.***
- ***BWA™ wireless access is NOT supported on Guest networks/Hotspots that use a portal page to login or Enterprise access points configured to require certificates or some other form of enterprise authentication (i.e. "802.1X", "RADIUS", OR "WPA/WPA2 Enterprise").***
  
- **\*Note: Mesh routers will not work with BWA™**



# WIFI MODULE RESET





# INFORMATION NEEDED TO RESET YOUR ACCOUNT



**PROVIDE THIS INFORMATION  
FOR A RESET OF YOU  
MODULE**




# Consumer Kit Includes Install Guides

bwa™ Wi-Fi Module

1-2-3 EASY INSTALLATION GUIDE

**Package Contents** **1**



1-2-3 Easy Installation Guide

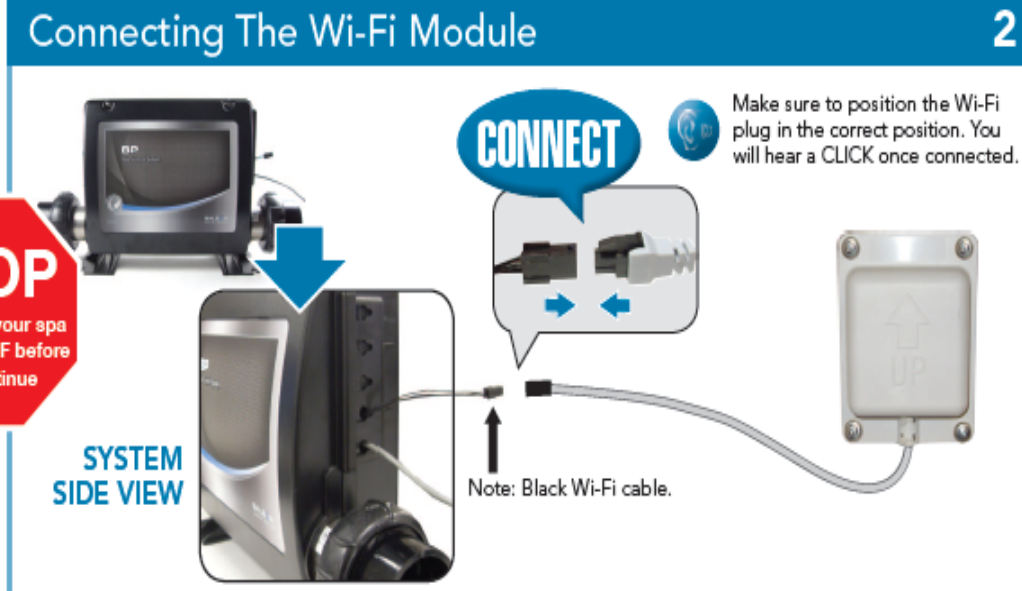
bwa™ Welcome Kit

**STOP**  
Make sure your spa is turned OFF before you continue

bwa™ Wi-Fi Module (50350)

Y-Splitter (25657)

**Connecting The Wi-Fi Module** **2**



**CONNECT**

Make sure to position the Wi-Fi plug in the correct position. You will hear a CLICK once connected.

**SYSTEM SIDE VIEW**

Note: Black Wi-Fi cable.

